

The majority of the following presentation is a flashback to 1967 prior to the widening of Broadway.

Most of the black and white photos were taken by Mike Dolan, a friend to HixNews. His photos are copyrighted.

Mike was kind enough to share his photos with the many Hicksville Alumni who are privy to the publication of HixNews.

Many thanks, Mike for your generosity in allowing all former students to remember Hicksville as it was before downtown was destroyed.



We will honor your request that no photos be copied or published anywhere other than in HixNews. Included are additional photos from various sources & years.



**Broadway slightly south of Old Country Road.  
Gus Reidlingers on the left with Botto Brothers Hardware  
in the background. Robert Chevrolet on right.**

**Old Country Road to the Left  
And Broadway Looking south on the Right**





**Fast Forward  
Circa 2007**

**Old Country Road to the left  
Broadway to the right**







**Broadway Looking south...E. Carl Street on left.  
Corner house soon demolished for new Goldman Bros. building.  
Old Country Road off in the distance.**



**Old Goldman Brothers Site on the West Side of Broadway  
south of Carl Street. Mary's Luncheonette  
just past the tree**







**Marys Luncheonette (O'Shaughnessys) Across from where the new Goldman Brothers was being built. The building under the tree is the old Goldman Building.**





**Mary & Dad in front  
Of Mary's  
Luncheonette**

**A Delivery to Mary's  
St Ignatius in Background**







Reinhardt  
Broadway  
Hotel

Looking North on  
East Broadway  
circa 1910

Old Post Office  
Building  
Demolished in  
1990's

**Goldman Brothers would eventually occupy the  
Site where the Reinhardt Hotel was standing.**



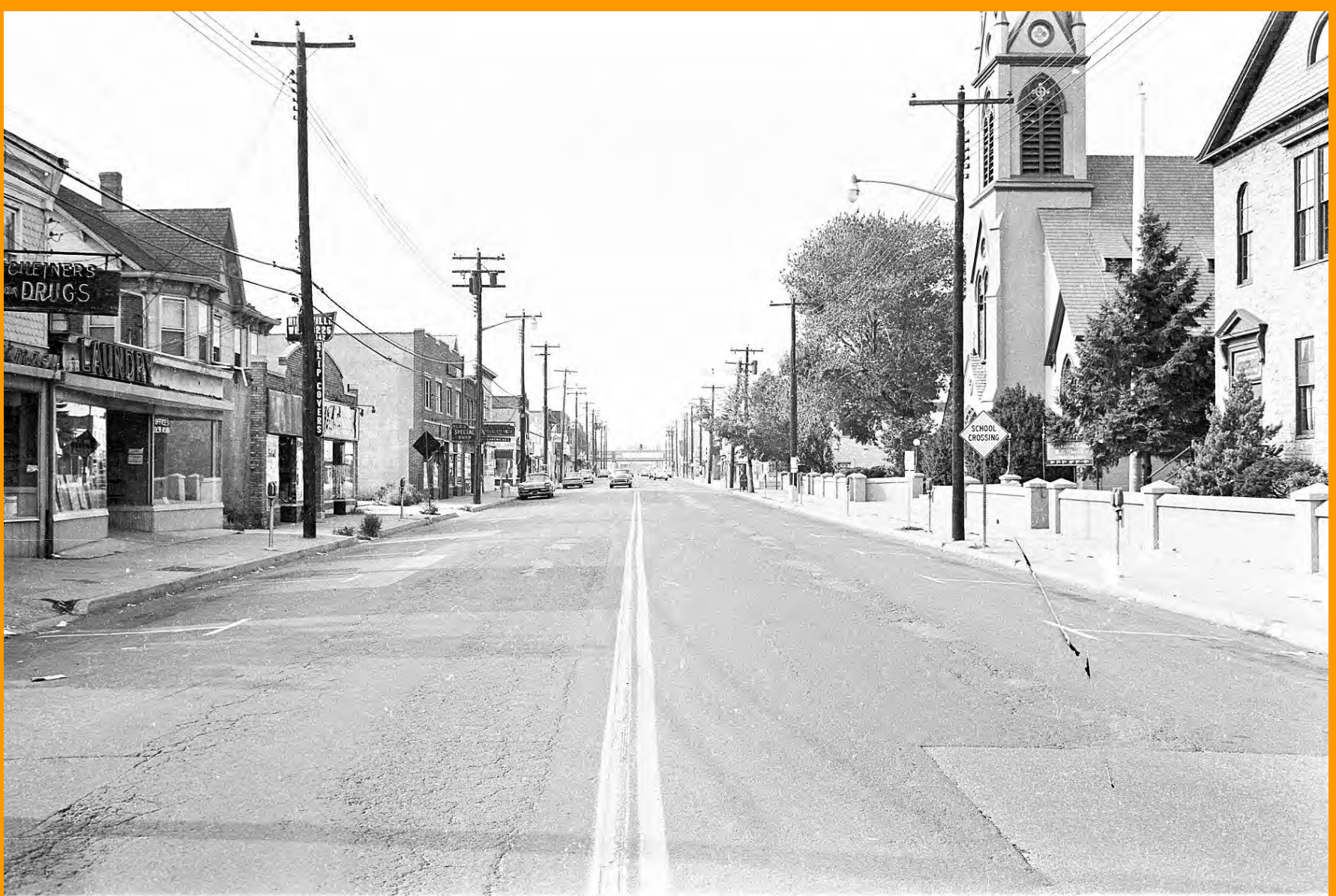


**Broadway looking north with Goldman Bros under construction.  
Old Country Road runs left and right.**

# Goldman Brothers Now Closed







**Broadway looking north at Cherry Street.  
Scheiners Drugs on left & St. Ignatius on right.**





RS

QUORS

WINE METAL LACOR STORE  
TEL. NO. L. 3588

JOHN J. MOLLA  
ELECTRIC  
L. 4211

RAY  
SPEEDOMETER  
TV  
RADIO  
ELECTRICAL  
CO.

RAY TELEVISION

Reception Radio Service

RAY TELEVISION

Reception Radio Service

OFFICE  
FOR RENT  
ALL COMMERCIAL  
AND RESIDENTIAL  
ON 1-4500

WESTERN  
UNION

BAR-GRILL

BAR-GRILL







L & J PIZZERIA  
SERVES HEROES

OV 1-8230

L & J PIZZERIA

Dutch Boy  
PAINTS

CHROMA  
PAINT  
WALLPAPER

WALLPAPER CHROMA SAHOO  
DUTCH BOY PAINTS

PAINT

KOHLER



**Broadway looking north at Nicholai Street**



**Fast Forward  
Broadway looking north at Nicholai Street  
Circa 2007**





**West side of Broadway between  
Nicholai & Marie Streets**







Peter & Wendy  
CHILDRENS SHOP

WE-8-2490  
APEX  
BUSINESS MACHINES

Custer  
SHOES

EARLY AMERICAN FURNITURE  
TABLES, CHAIRS, BEDS

Ginger's

BAKERY



# Broadway Looking south at Nicholai Street



# Broadway Looking south at Nicholai Street







**Broadway Looking north at Marie Street**



**BROADWAY & E. MARIE**



# Broadway looking south from Marie Street





Ginger's

REC. EXCH.

HAIR STYLISTS

AMERICAN FURNITURE

ESTABLISHED 1906 R. A. Esslinger ESTABLISHED 1906

JEWELER OPTOMETRIST

SCHOOL CROSSING

VINCE BRAUN'S MEAT MARKET

VINCE BRAUN'S MEAT MARKET FROZEN FOODS

D'VIE

100 FLORAL DES





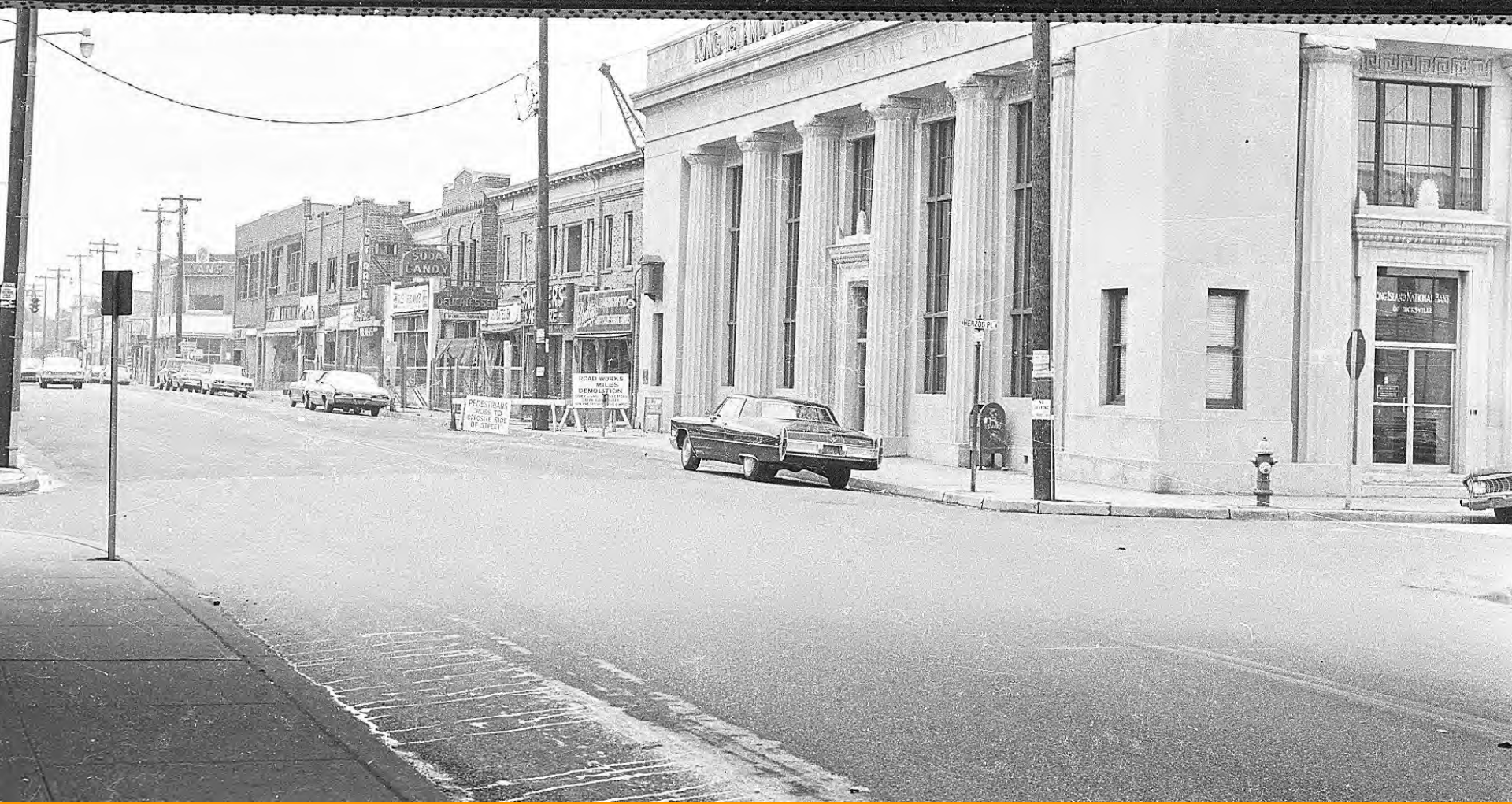
**Broadway looking south from Marie Street**



**Flashback**  
**Broadway looking south from Marie Street**  
**Circa 1910**







**Broadway looking south toward Marie Street  
From Herzog Place near elevated tracks.**



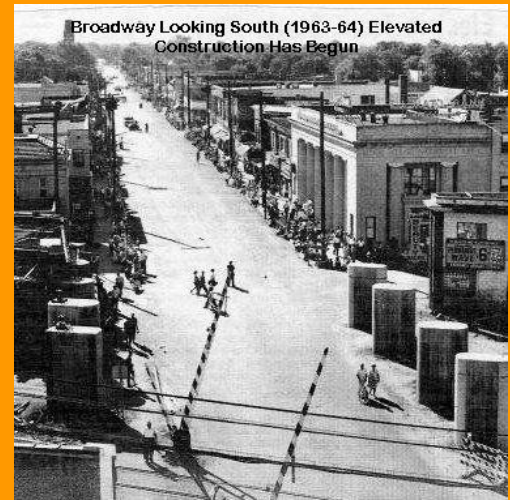
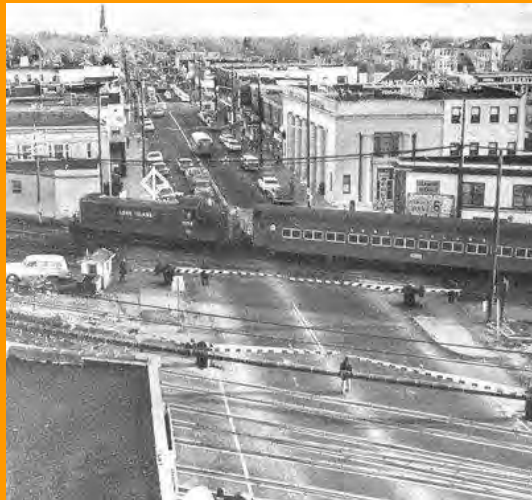
**Flashback**  
**Broadway looking south from Herzog Place**  
**Hicksville marching band**  
**Circa 1945**







**...the elevated tracks at Herzog Place**







**Englert's Bakery on Northwest corner of Marie Street.  
Whelan Drugs was on Northeast corner.  
Next door to Englert's was the Sweet Shop.**



Alert's BAKERY

Alert's BAKERY

W. O. G. B. A.

Tom's Hardware

CORWATE

NATIONAL BANK  
KANSASVILLE  
100 CHURCH ST. Bldg.

SODA  
LADY

ROAD WORKS  
MILES  
DEMOLITION  
OBEY SIGNS - DIRECTIONS  
DRIVE CAUTIOUSLY  
NEW YORK STATE DEPT. OF PUBLIC WORKS

PEDESTRIANS  
CROSS TO  
OPPOSITE SIDE  
OF STREET





**Flashback**  
**Check out the cars!!!**







**Whelan Drugs...**





**Looking East on Marie Street toward the Hicksville Movie Theater & Firehouse.**



A SHOT IN THE DARK  
PREMIERE AT 7 & 9 30  
OF A HARD DAYS NIGHT

BEATLES  
OF GOOD ALBUMS







**Newbridge Road and Marie Street looking east toward Broadway. Dalton Funeral Home now occupies the corner property.**





**Looking across Marie Street from the  
Trinity Lutheran parking lot.**





**Southwest corner Marie Street  
at Jerusalem Avenue**





**Marie Street heading west toward Newbridge Road.**





**Marie Street looking east toward Jerusalem Avenue. Trinity Lutheran  
Is visible in the left corner of the photograph.**





**...the end of Marie Street at Newbridge Road.**





**...West Marie & Newbridge**





**Newbridge Road with Duffy Avenue on the right. Marie Street up on the left.**





**...the ending section of old Newbridge Road looking from Marie Street. The beginning of Duffy Avenue is where Golden Auto Body is shown.**



That sure brought back some  
incredible memories. I  
remember learning to drive on  
Newbridge Road.

Hope You All Enjoyed the  
presentation.

Buffalo Bob Casale

[bufbob@juno.com](mailto:bufbob@juno.com)